

062630

RECORDED
LARAMIE COUNTY
CHEYENNE, WY.

Southwest corner Section 5 T17N R62W
CERTIFIED LAND CORNER RECORDATION

'89 OCT 5 PM 3 00

DESCRIPTION OF CORNER EVIDENCE FOUND, AND ORIGINAL RECORD (If known)

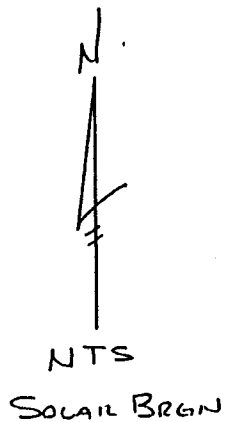
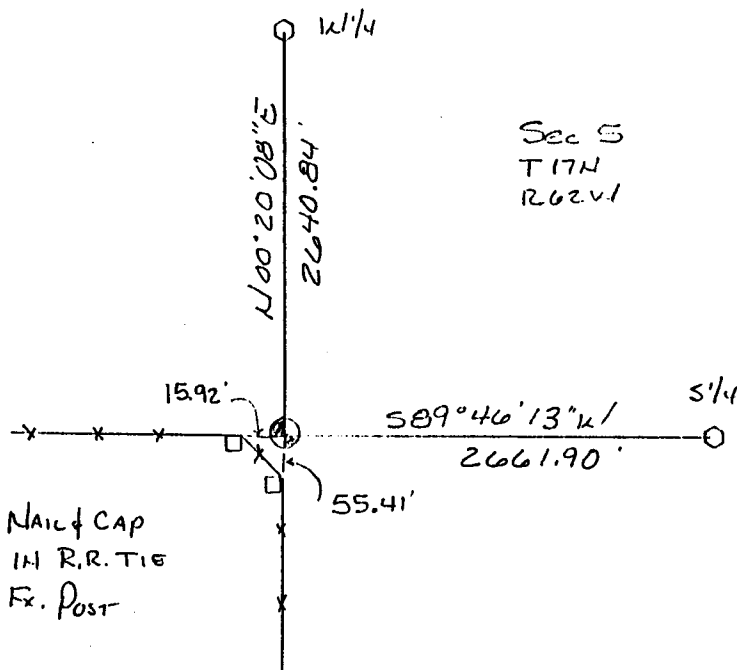
Found no evidence of the original monument. The original Stone was a 18x15x4 Sandstone. We found a West/South fence near the corner. We compared the fence location to found existing monumentation North South East West from the corner. We talked to land owners who said the fence is on the section line. Called the corner obliterated and reset at the fence corner location.

DESCRIPTION OF MONUMENT AND ACCESSORIES ESTABLISHED TO PERPETUATE THE ORIGINAL LOCATION OF THIS CORNER:

Set a Corps of Engineers Brass Cap on a 30" long No.5 rebar. Raised a mound of stone. Tied the corner to the existing fence as shown below.

AUG 23 1989

SKETCH, WITH COURSE AND DISTANCE TO ADJACENT CORNER IF DETERMINED IN THIS SURVEY. (May Sketch or Paste Reproduction on Reverse Side.)



I, Wallace C. Muscott certify that I have carefully performed or reviewed the work done on the diagrammed corner as reported on this recordation form and approve the same.

Wallace C. Muscott
Signature of Surveyor

3830
Registration No.

STATE OF WYOMING,
Office of Clerk and Recorder,
County of _____

This "corner record" was filed for record on the _____ day of _____, 19____, was noted on the cross-index plat and is assigned page No. _____, in book No. _____.

Cross Index No.	County Official			
	E 5	T. 17N	R. 62W	6th Mer.
_____	_____	_____	_____	Mer.
_____	_____	_____	_____	Mer.
_____	_____	_____	_____	Mer.
_____	_____	_____	_____	Mer.
_____	_____	_____	_____	Mer.
_____	_____	_____	_____	Mer.
_____	_____	_____	_____	Mer.

BOOK 1278

1439